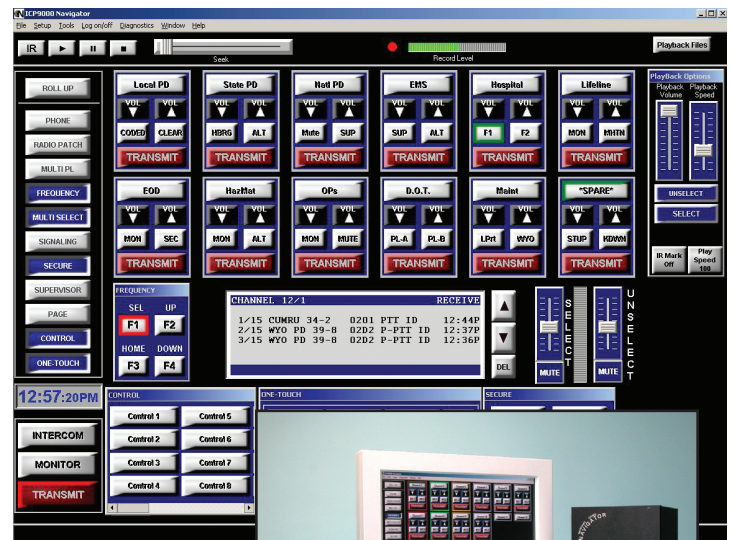


Features

- Graphical User Interface with Custom Profile Settings
- Touch-screen, Wand, or Mouse Operation
- Available in 4, 8, and 12 Channel Control
- 4 Channel Expansion Kits Support System Growth
- 16 - Frequency Control / Channel
- 10 (minimum) Consoles per System
- Supports Tone, DC, and E&M Control Types
- Stack Paging
- Multi-Channel Sequential Group Paging
- Alert Page
- Paging Encoder for Individual or Group Paging
- DTMF Decode for Automatic Number Identification
- Full Duplex Telephone Interface Capability
- Select Channel Volume Control
- Adjustable Alert and Paging Tones
- Enhanced Multi-Tasking Operation
- 24-Hour Clock
- Supports Headset, Gooseneck Desk Mic, & Footswitch
- Easy to use Windows® - based Programming Application
- Audio Output to Logging Voice Recorder
- Enhanced User Customization
- VU Meter
- Hot Standby Paging
- Instant Recall Recording (IRR) Option
- Output Control Option
- One-Touch / Quick-Touch Paging
- Programmable Function Keys
- MDC1200 Option



Windows 7 or 10
(32 or 64 bit)



PC Monitor and Speakers Purchased Separately

Applications

- Police, Fire, Ambulance
- Utilities, Taxis, Airlines
- Forestry, Parks, Recreation
- Industries, Municipalities, Construction
- Security and Public Safety

The ICP9000 NAVIGATOR Series Console is a stand-alone dispatch console that provides all the features and functionality of our popular ICP9000 series desktop consoles in a modern Graphical User Interface (GUI) format. All pushbutton and indicator functionality is located on an interactive computer display supporting touch-screen or mouse operation.

The ICP9000 NAVIGATOR Master Control Unit (MCU) can be neatly stored beneath a desk, on a wall, or in an electronics rack. Each unit is capable of controlling up to twelve (12) conventional base radios, and a system will support a minimum of ten (10) Navigator console positions (one MCU per position). The unit is available in 4, 8, or 12 channel configurations and is easily expandable to meet future needs. The unit is field-programmable using GAI-TRONICS' Windows®-based CARD Suite application software (included in XAC4000B Programming Bundle Flash Drive). This software provides smooth navigation and programming and is backward compatible with similar consoles.

The GAI-TRONICS NAVIGATOR's flexibility allows dispatchers to move icons and color-code radio channels to create and save unique user settings. Unused or idle channels can be "rolled up" to hide the control buttons for that channel, and the paging keypad will only be displayed when active. Other infrequently used controls can be hidden until ready for use.

The ICP9000 NAVIGATOR is feature rich and provides the dispatcher with complete system control. The dispatcher can choose single or multiple channels to transmit and receive audio. The audio is routed to volume controlled select and unselect speakers (left and right PC speakers). The unit always includes DTMF Decode, Paging Encode and 16-frequency control per channel as standard features.

In addition to the ICP9000 NAVIGATOR's standard features, a variety of options and field install kits are available to provide enhanced control of the radio system. These options provide the unit with DC control, Telco interface, E & M signaling, supervisory control for priority conversations, telephone interface, and battery revert to prevent downtime during a power outage. An Instant Recall Record Option is also available to provide one-touch replay of the last 20 seconds of receive audio. Finally, an Output Control Option is available to provide discreet control of up to 32 open-collector outputs. Hands-free microphone accessories such as headset, desk microphone, and footswitch are also available.

The ICP9000 NAVIGATOR works in conjunction with standard GAI-TRONICS Tone (ITA2000A) and DC (IDA1000A) adapters. A single adapter is placed local to the radio and can control up to 10 consoles.

Specifications for ICP9000 NAVIGATOR

General

Temperature Range	0° to +50° C
Humidity	95% at 50° C
Physical Size (MCU)	8.75 H x 17.0 W x 11.3 D inches
Rack-mount Size	5U
Power Input	120/240 V ac, ±15% 47 to 63 Hz with external power module; or +10.5 to 18 V dc

Audio General

Audio Response	±3 dB at 3000 Hz (except guard tone notch)
Hum and Noise	Transmit - Less than 50 dB below full rated power Receive - Less than 55 dB below full rated power
Audio Distortion	Less than 2% THD
Compression	Normalizes input variations of 30 dB

Receiver Audio

Input	-25 dBm to +11 dBm, selectable in steps
Cross-talk	60 dB below rated output levels at rated line impedance
Input Impedance	600 ohms nominal

Tone Remote Control

Guard Tone	2100, 2175, 2325, 2800 (default = 2175 Hz)
Function Tones	1950, 1850, 1750, 1650, 1550, 1450, 1350, 1250, 1150, 1050, 950, 850, and 750 Hz
Default Function Tones	F1 Transmit: 1950 Hz F2 Transmit: 1850 Hz F3 Transmit: 1350 Hz F4 Transmit: 1250 Hz Monitor: 2050 Hz Default: Selectable via CARD Suite Software Application

Transmit Audio

Condenser Microphone	Selectable, Digital steps 1 through 5
Microphone Sensitivity	Reference 165 mV, selectable, Digital steps 1 through 5
Audio Out to Phone Line	-20 dBm to +11 dBm into 600 ohm load
Line Balance	70 dB at 1000 Hz

DC Remote Control

Audio Out to Phone Line	F1 Transmit: +5.5 mA F2 Transmit: +12.5 mA Monitor: -2.5 mA Default: Selectable via GAI-Tronics® CARD Suite Software Application
-------------------------	--

FCC Information

FCC Registration Number	US: ADGOT01B46053
Ringer Equivalence Number (REN)	0.1
Network Connection (USOC)	RJ11

IC Information (Canada)

IC Certification Number	8226048 A
Ringer Equivalence Number (REN)	0.1
Connecting Method	CA11A

Part Numbers, Accessories & Options

Main Consoles:

ICPN9004A	4 Channel Navigator MCU
ICPN9008A	8 Channel Navigator MCU
ICPN9012A	12 Channel Navigator MCU
XAC2000A	Navigator GUI Software (Included)
XCP0100A	4 Channel Expansion Kit

* Programming Software

XAC4000B	Programming Bundle Flash Drive (Included)
XCP0170A	CARD Suite Programming Cable

Accessories:

XAAB002A	Audio Accessory Box
XHS003C	Headset (Requires XCC003A & XCP0140A)
XCC003C	Headset Coil Cord with PTT button
XCP0140A	Headset Interface Box
XDM005A	Desktop Gooseneck Microphone
XFS002A	Dual Footswitch with PTT and Monitor Paddles

Field Install Kits: Upgrades available for installation by customer

XCP0010A	DC Control Field Install Kit
XCP0030A	25-Pair Telco Interface Field Install Kit
XCP0040A	4 Channel E&M Signaling Field Install Kit
XCP0050A	Supervisory Control Field Install Kit
XCP0060A	External Enhanced Phone Interface Field Install Kit
XCP0070A	Direct Enhanced Phone Interface Field Install Kit
XCP0080A	Battery Revert Field Install Kit
XCP0600A	Output Control Kit
XRM0001A	Output Control Relay Kit
TDN9413A	MDC1200 STAT-ALERT Field Install Kit

- Note:** 1. A touch-screen monitor with a minimum 19-inch viewing area, and a 1152 x 864 screen resolution is recommended for touch-screen operation.
2. Amplified PC Speakers with a minimum 40 Watt output and Sound Blaster® sound card are recommended.
3. A dedicated PC is required, meeting the following parameters:
- Windows 7 or 10 (32 or 64 bit)
 - 2GB Hard Drive
 - 256MB Ram (512MB Recommended)
 - Audio Card
 - 1.6 G Processor
 - 32MB Video Card
- *4. CARD Suite is compatible with Windows 7 or 10.

Specifications Subject To Change Without Notice.



Toll Free: 1 (800) 492-1212 Tel: (610) 777-1374
Fax: (610) 796-5954 www.gai-tronics.com



Quality Management System Certified by DNV-GL - ISO 9001:2015. The policy of GAI-TRONICS is one of continuous improvement; therefore the company reserves the right to change specifications without notice.

